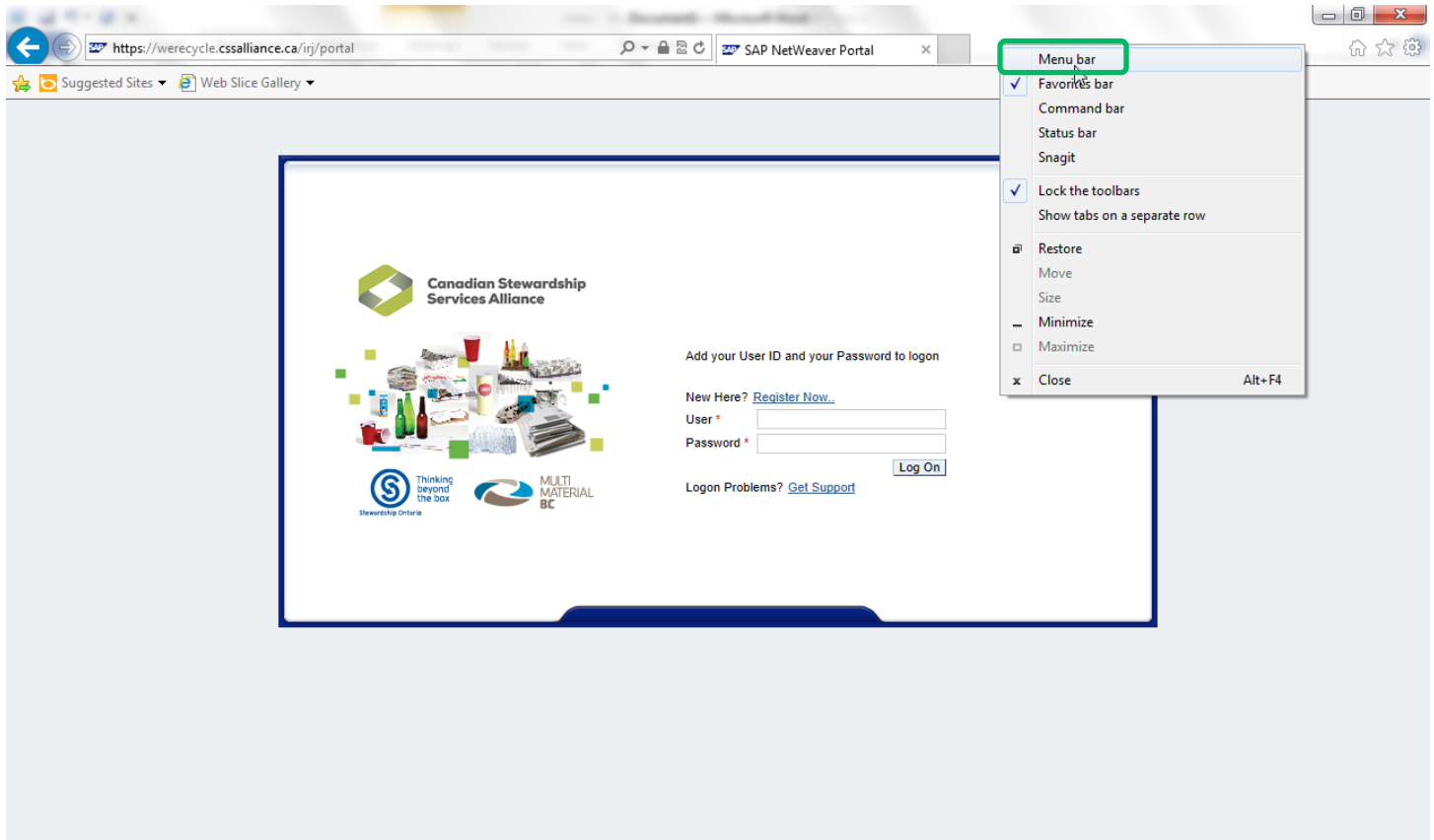





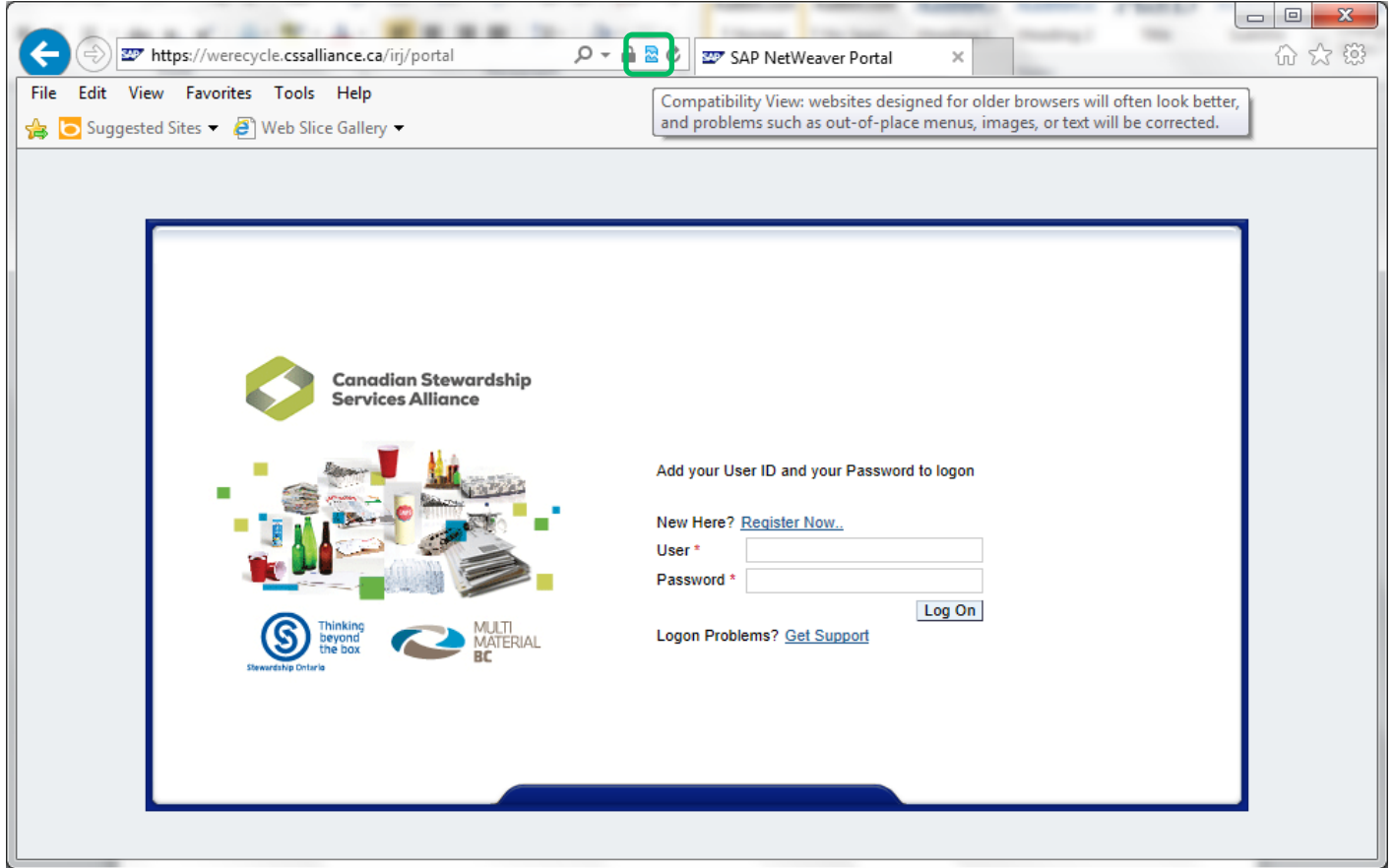
Enable Pop-ups for the WeRecycle Portal in Internet Explorer 10

- 1) You may need to enable your Menu bar before continuing. To do so, right click on an empty space at the top of your browser and click on **'Menu bar'**. You can also press the **Alt** key on your keyboard to make the Menu bar temporarily visible.




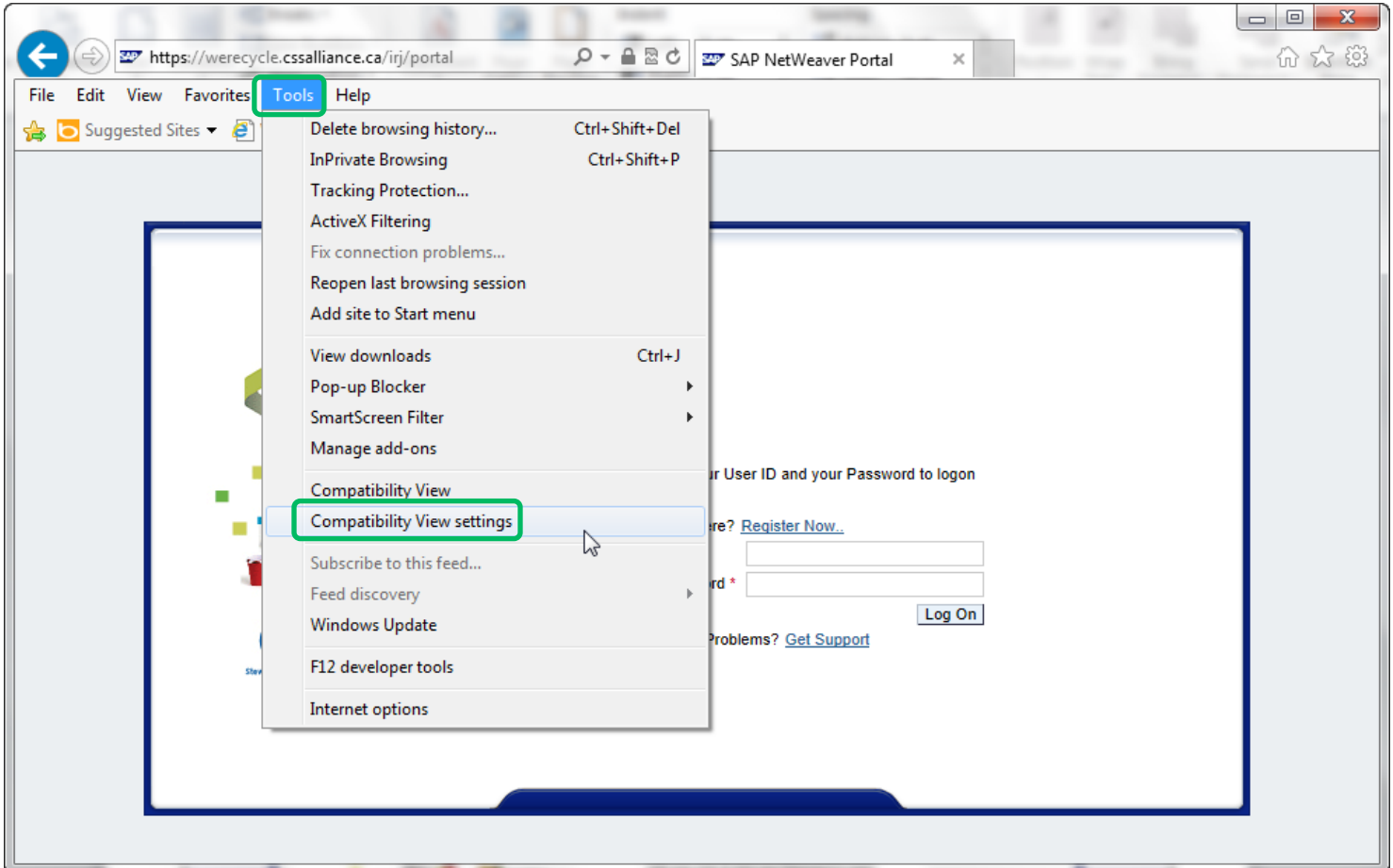


- 2) Ensure compatibility mode is enabled before continuing. To do so, click on the **Compatibility View** button  on the far right of the **Address Bar**.



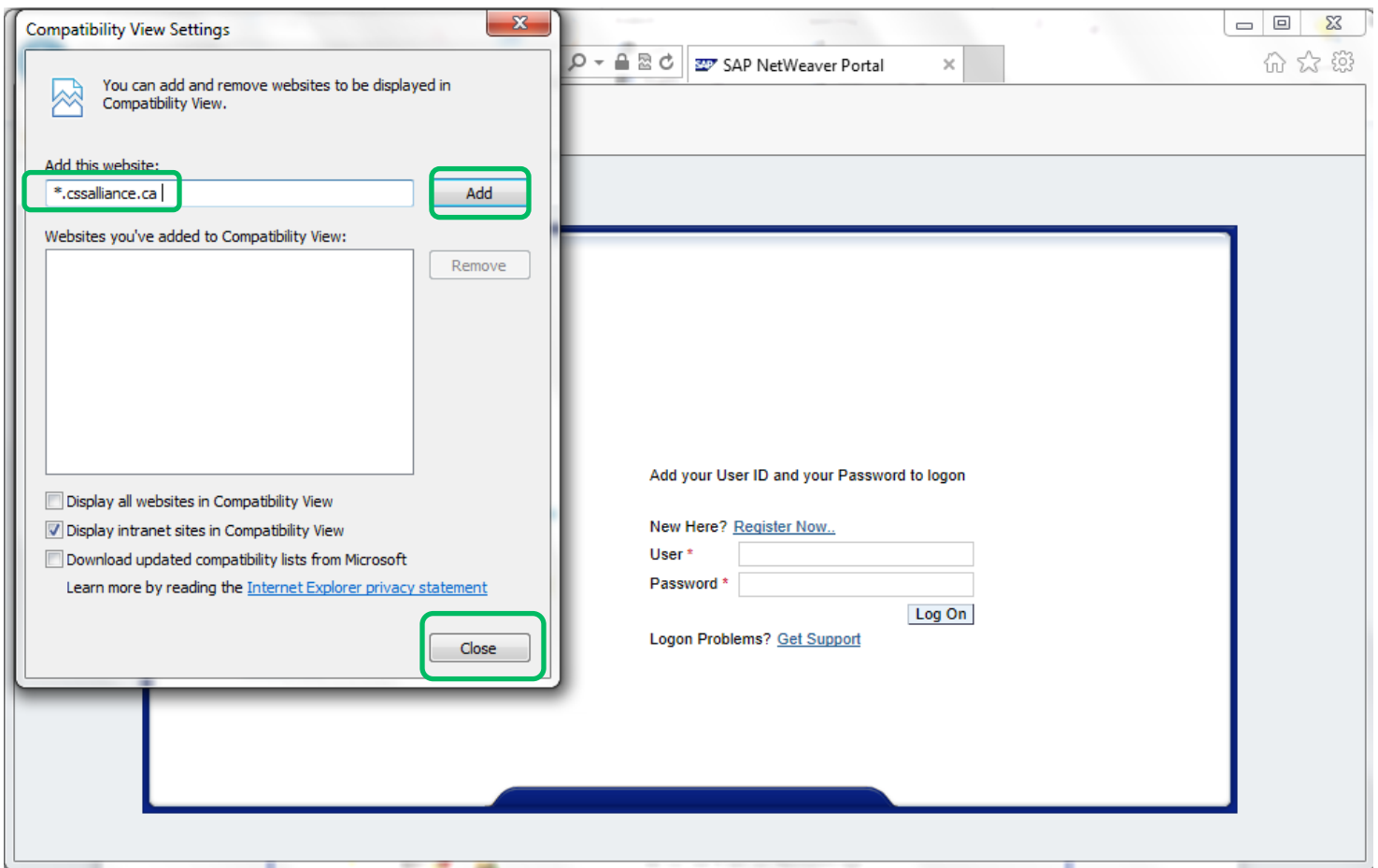


- 3) If you do not see the **Compatibility View** button , enable Compatibility View by click on **Tools** and then **Compatibility View Settings**



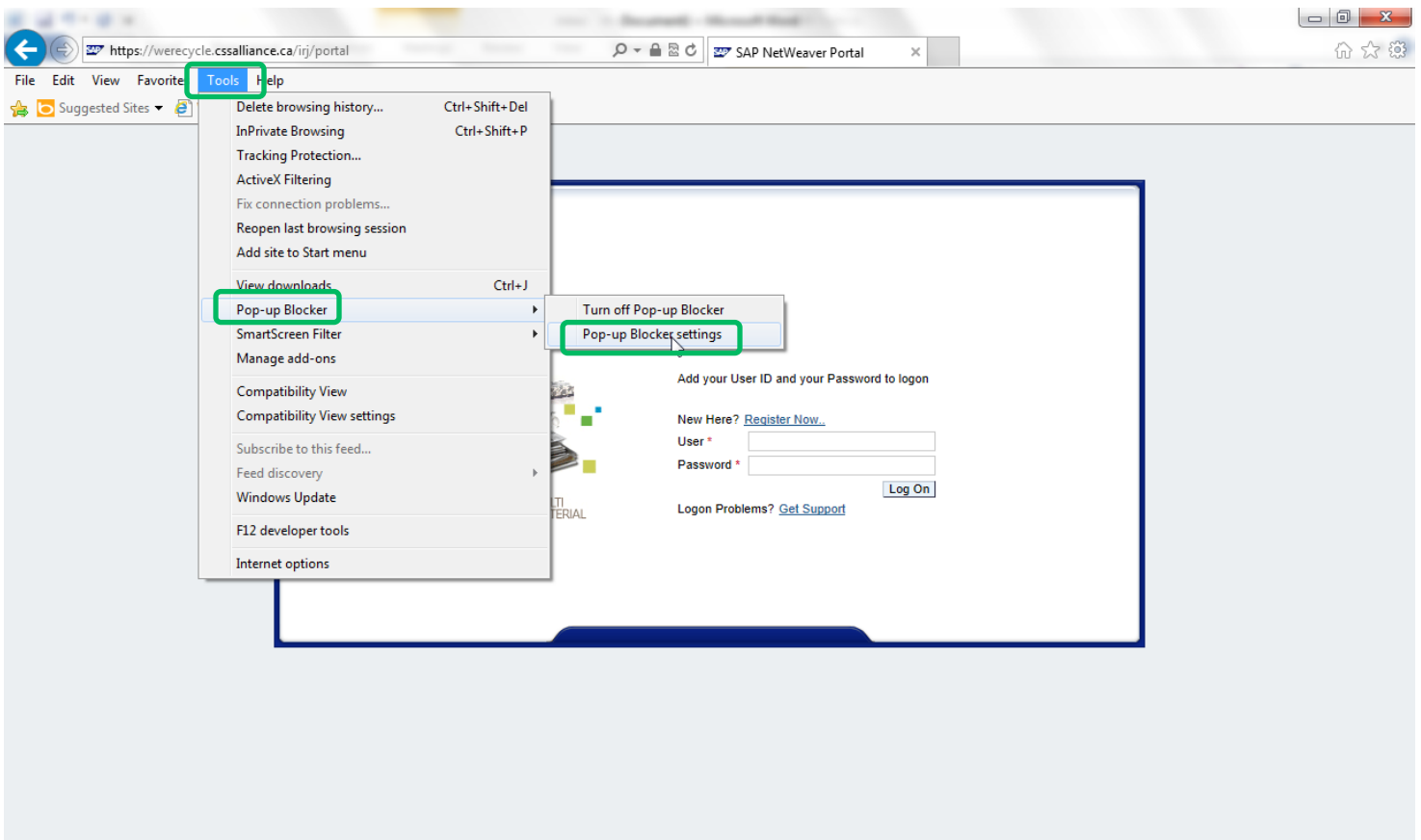


- 4) In the **Compatibility View Settings** window, under the **Add this website** field, type in ***.cssalliance.ca** and then click on the **Add** button. Click on **Close** to save this setting.





- 5) To enable pop-ups in from the CSSA domain, click on **Tools** in the menu bar, then **Pop-up Blocker**, and finally **Pop-up Blocker settings**.





- 6) In the **Pop-up Blocker Settings window** that appears, type in **wecycle.cssalliance.ca** under 'Address of website to allow:' and click on the **Add** button. Once the entry for **wecycle.cssalliance.ca** appears under **Allowed sites:** click on the **Close** button to finalize your changes. Close Internet Explorer and access the WeRecycle web portal again to log in.

